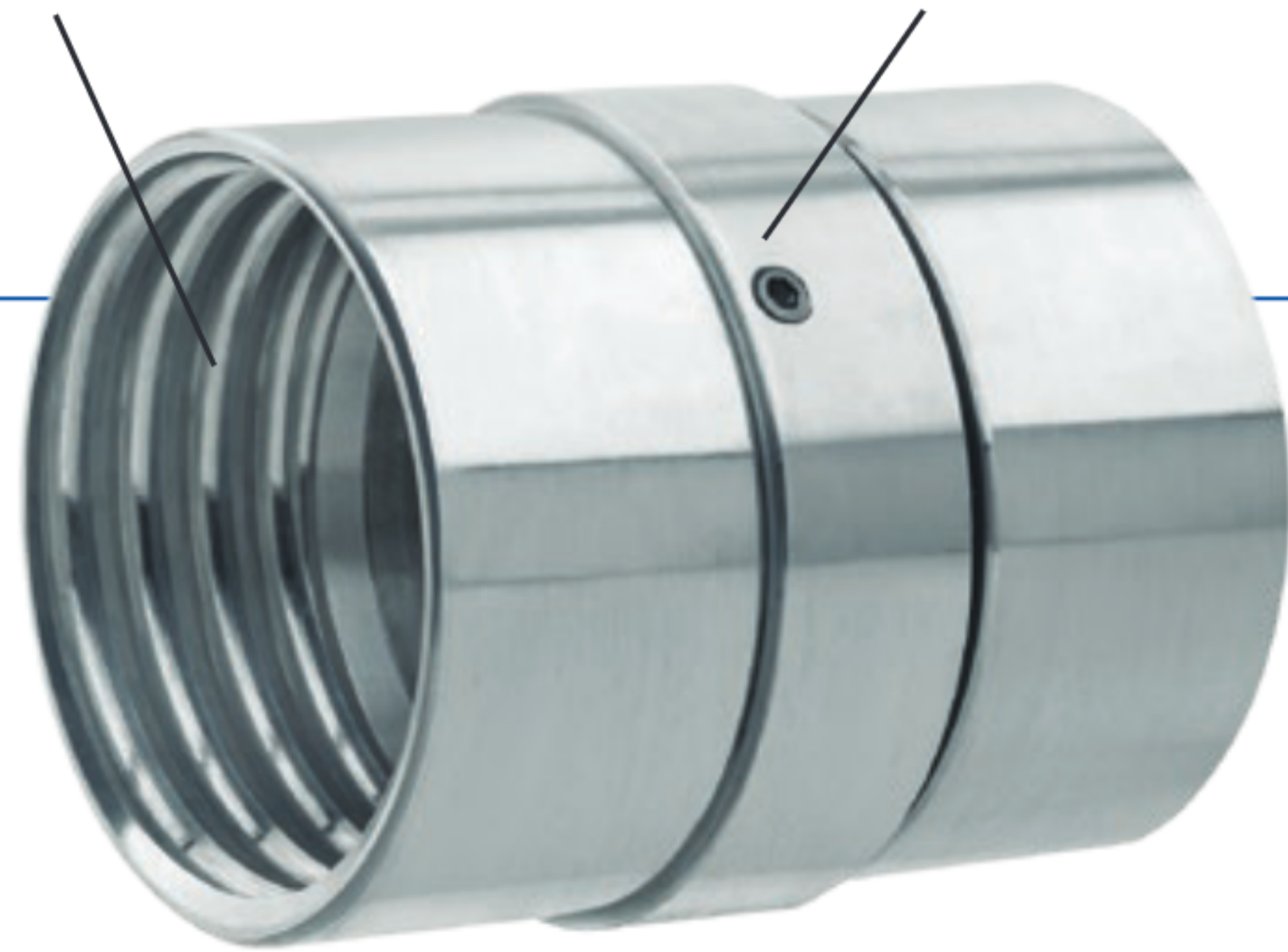


Ribbed interior screws over outside of the hose.

Swivel joint reduces instances of hose twisting.



## Full Flow Swivel Coupling

## AL-MHS Series (Aluminum) Full-Flow Swivel Coupling Set

### GENERAL APPLICATIONS

Kuriyama Camlock Couplings are intended for use in many industrial applications. To learn more, please refer to pages 296-297 in this catalog.

### FEATURES AND ADVANTAGES

- **Full Flow Interior** – Prevents material build-up due to the absence of an interior hose shank. Instead, our coupling screws easily and securely over the outside of the hose to provide full flow.
- **Swivel Joint** – Stainless steel ball bearings ensure smooth swivel action, reducing instances of hose twisting.
- **Versatile 2-piece Design** – Coupling consists of male and female ends connected by NPSM threads. Male portion also sold separately.

### VIEW ONLINE



SCAN FOR INFO  
or visit  
[KOA.link/Full-Flow](http://KOA.link/Full-Flow)



Fits the following Tigerflex™ series hoses:

- MULCH™
- MULCH-LT™
- BARK™
- LK™
- UV1™



**AL-MHM Series (Aluminum)**  
Full-Flow Coupling Male



**AL-MHD Series (Aluminum)**  
Part D Coupler x Female



**AL-MHF Series (Aluminum)**  
Full-Flow Coupling Female



**AL-MHA Series (Aluminum)**  
Part A Male Coupler x Female

Part Number	Size (in)	Thread Type	Weight Each (lbs)	Standard Carton
AL-MHS400	4	NPSM	2.67	1
AL-MHM400	4	NPSM	0.93	1
AL-MHF400	4	NPSM	1.23	1
AL-MHD400	4	NPSM	2.16	1
AL-MHA400	4	NPSM	1.58	1

Because we continually examine ways to improve our products, we reserve the right to alter specifications or discontinue products without prior notice.