

PF402 TOOLING



ENGINEERED TO ACCOMMODATE YOUR NEEDS

- 2 piece PF402 rubber caged die set make accurate fitting positioning easy.
- PF402 rubber caged dies sets for heavy duty environments.
- Color-coded die rubber cages for easy identification.



Kuriyama of America, Inc.

Headquarters, Sales Office and Warehouse Location

360 E. State Parkway • Schaumburg, IL 60173-5335

Phone: (847) 755-0360 • Toll-free FAX: (800) 800-0320 • International FAX: (847) 885-0996

Web Site: www.kuriyama.com E-Mail: sales@kuriyama.com

Visit us
www.kuriyama.com
on the Web!

SOUTHWEST WAREHOUSE
KURIYAMA OF AMERICA, INC.
HOUSTON
531 PORTWALL ST., SUITE 100
HOUSTON, TX 77029
Phone: (713) 674-8212
Toll Free Phone: (800) 501-6808
FAX: (713) 674-5214
Toll Free FAX: (800) 800-5214

WESTERN WAREHOUSE
KURIYAMA OF AMERICA, INC.
SANTA FE SPRINGS
10749 SHOEMAKER AVE.
SANTA FE SPRINGS, CA 90670-4039
Phone: (562) 941-4507
FAX: (562) 941-8940
Toll Free FAX: (800) 326-8940

SOUTHEAST WAREHOUSE
FORTNEY SALES CO., INC.
4221 CANTRELL ROAD NW
ACWORTH, GA 30101
Phone: (770) 427-6528
FAX: (770) 423-9249
Toll Free FAX: (800) 423-9249
Web Site: www.fortneysales.com
E-Mail: sales@fortneysales.com

EASTERN WAREHOUSE
EASTERN RUBBER & PLASTICS CO., INC.
100 GOLDMAN DR.
PLUMSTED INDUSTRIAL PARK
CREAM RIDGE, NJ 08514
Phone: (609) 758-0100
FAX: (609) 758-0102
Toll Free FAX: (800) 445-7138
Web Site: www.easternrubber.com
E-Mail: sales@easternrubber.com

IN CANADA:

KURI TEC CORPORATION, 140 ROY BLVD., BRANTFORD, ON N3R 7K2, CANADA
Phone: (519) 753-6717 • FAX: (519) 753-7737 • Web Site: www.kuritec.com • Email: sales@kuritec.com

IN MEXICO:

KURIYAMA DE MÉXICO S DE RL DE CV, AV JOSE PALOMO MARTINEZ NO 520-20, BODEGA 5, PARQUE INDUSTRIAL OMOLAP, APODACA, N.L. CP:66633, MEXICO
Telefonos: (81) 1086-1870 ó 71 • Lada sin Costo 01-800-822-52-00 • FAX: (81) 1086-1869
Internet: www.kuriyama.com • Correo Electronico: ventas@kuriyama.com

PF402 TOOLING

The PF402 Tooling is compatible with most of the weatherhead® crimpers.



T400 Main Pusher Plate
W/ Magnets
P/N:PF400-MPP



T400 12mm Die Set
P/N:PF402-12D



T400 14.2mm Die Set
P/N:PF402-14.2D



T400 17.4mm Die Set
P/N:PF402-17.4D



T400 22.2mm Die Set
P/N:PF402-22.2D



T400 Spacer Ring #1
P/N:PF402-1-SR



T400 Spacer Ring #2
P/N:PF402-2-SR



T400 Main Pusher Plate With Nose Down

T400 Spacer Ring #2

PF402 Die Set

Die Ring



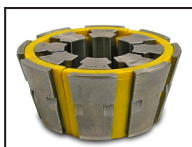
P400 PORTABLE Service Hose Crimper



Light Weight Portable Unit:
Truly "portable" crimper can be carried to almost any location where service is required.



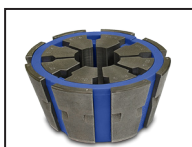
T400 12mm Die Set
P/N:PF402-12D



T400 14.2mm Die Set
P/N:PF402-14.2D



T400 17.4mm Die Set
P/N:PF402-17.4D



T400 22.2mm Die Set
P/N:PF402-22.2D



Adapter Bowl 420 to
400 Bowl
P/N:PF420/400-AB



T400 Main Pusher Plate
W/ Magnets
P/N:PF400-MPP



Removable Pusher
P/N:100825



T400 Spacer Ring #1
P/N:PF402-1-SR



T400 Spacer Ring #2
P/N:PF402-2-SR

ENGINEERED TO ACCOMMODATE YOUR NEEDS

- 35 Tons of crimping force.
- Hose capacity up to 1" 2 wire and 3/4" 4SP.
- Available ValPower® Hand Pump, Pneumatic Pump 10,000 psi or Electric Pump.
- Removable Pusher and 2 piece PF402 rubber caged die set make accurate fitting positioning easy.
- PF402 rubber caged dies sets for heavy duty environments.
- Color-coded die rubber cages for easy identification.
- Base mounting holes allow the crimper to be bench or truck bed mounted if required.

DURABLE, RELIABLE DESIGN = PROFITABILITY

- Crimper position can be adjusted for optimum crimping position or dropped to vertical position for better balance when the crimper is being carried.
- Open design to provide excellent operator visibility.
- Complete range of dies and accessories available.



Kuriyama of America, Inc.

Headquarters, Sales Office and Warehouse Location

360 E. State Parkway • Schaumburg, IL 60173-5335

Phone: (847) 755-0360 • Toll-free FAX: (800) 800-0320 • International FAX: (847) 885-0996

Web Site: www.kuriyama.com

E-Mail: sales@kuriyama.com



P400 PORTABLE Service Hose Crimper

The P400 Portable series hose crimper paired with either a ValPower® Hand Pump, Pneumatic Pump or Electric Pump make the perfect combination for portable crimping requirements.



T420 Micrometer (Available)
P/N:103085



Hand Pump (Available)
P/N:VHP-10-43



Pneumatic Pump (Available)
P/N:VAP-10-100



Electric Pump (Available)
P/N:VEP1001



Die Removal Magnet
(Included) P/N:104679



CRIMPX Die Lubricant: Oil 4 oz bottle with dauber cap
(Included) P/N:103886



CRIMPX Die Lubricant (Available)
Grease 4 oz can with brush
P/N:104162



Die Storage Shelf
(Available) P/N:101431

Quick Disconnect

Powerful 35 Ton Hydraulic Cylinder

Removable Pusher

T400 Main Pusher Plate

T400 Spacer Ring #2

T400 Rubber Cage Die Series

Adapter Bowl 420 to 400 Bowl

Mounted on a convenient carrying frame

24"

Crimper position can be adjusted

12-1/2"

Small Footprint for minimum use of space



Technical Data

35 Ton
1" - 2 Wire
3/4" - 4SP
L: 12-1/2" x W: 12-1/2" x H: 24"
Weight: 47 lbs
Die Series: T400 Rubber Caged