

Nominal Specifications

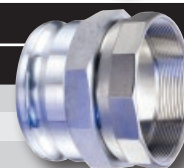
THREADED SWIVEL ALUMINUM FEMALE COUPLER WITH SS304 THREADED NPT INSERT

Part Number	Size (in.)	Weight Each (lbs.)	Standard Carton
KAS-C401	4	5.20	1
KAS-C501	5	6.53	1
KAS-C601	6	10.49	1



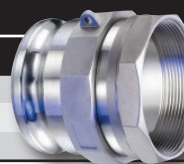
THREADED SWIVEL ALUMINUM MALE ADAPTOR WITH SS304 THREADED NPT INSERT

Part Number	Size (in.)	Weight Each (lbs.)	Standard Carton
KAS-E401	4	4.67	1
KAS-E501	5	5.42	1
KAS-E601	6	6.97	1



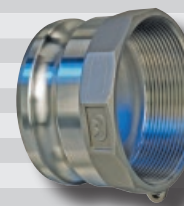
THREADED SWIVEL SS304 MALE ADAPTOR WITH SS304 THREADED NPT INSERT

Part Number	Size (in.)	Weight Each (lbs.)	Standard Carton
KSS-E401	4	6.12	1
KSS-E501	5	7.61	1
KSS-E601	6	11.07	1



THREADED PART 'A' QUICK-ACTING MALE ADAPTOR x FEMALE NPT (NON-SWIVEL)

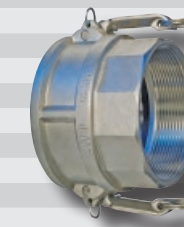
Part Number	Size (in.)	Weight Each (lbs.)	Standard Carton†
AL-A300	3	0.70	35
SS304-A300	3	2.16	8
SS-A300	3	2.16	8
AL-A400	4	1.58	20
SS304-A400	4	2.88	6
SS-A400	4	2.88	6
AL-A500	5	1.75	4
SS304-A500	5	4.30	4
SS-A500	5	4.30	4
AL-A600	6	2.95	15
SS304-A600	6	6.00	2
SS-A600	6	6.00	2



Note: Couplings can be purchased individually also.

THREADED PART 'D' QUICK-ACTING FEMALE COUPLER x FEMALE NPT (NON-SWIVEL)

Part Number	Size (in.)	Weight Each (lbs.)	Standard Carton†
AL-D300	3	1.80	20
SS304-D300	3	3.82	8
SS-D300	3	3.82	8
AL-D400	4	2.16	10
SS304-D400	4	5.14	6
SS-D400	4	5.14	6
AL-D500	5	3.42	4
SS304-D500	5	8.00	4
SS-D500	5	8.00	4
AL-D600	6	4.24	10
SS304-D600	6	10.06	2
SS-D600	6	10.06	2



Note: Couplings can be purchased individually also.

WHITE NEOPRENE (FDA) GASKETS FOR QUICK ACTING COUPLINGS

Part Number	Size (in.)	Weight Each (lbs.)	Standard Carton
WN300	3	0.042	10
WN400	4	0.066	10
WN500	5	0.094	10
WN600	6	0.116	10



Note: For standard part "A" and "D" Quick-Acting Couplings, please refer to our separate Kuriyama-Couplings™ full line catalog. Web: <http://www.kuriyama.com>

Please refer to the back page for the location of your nearest warehouse for availability of products/sizes shown.

BECAUSE WE CONTINUALLY EXAMINE WAYS TO IMPROVE OUR PRODUCTS, WE RESERVE THE RIGHT TO ALTER SPECIFICATIONS OR DISCONTINUE PRODUCTS WITHOUT PRIOR NOTICE.