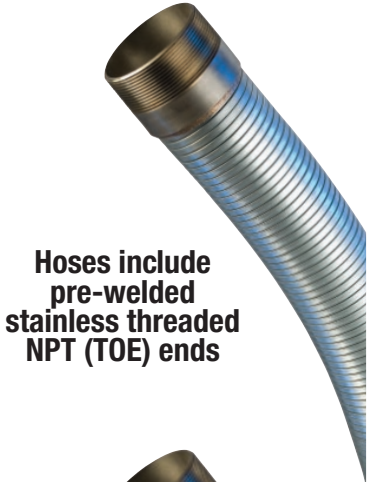


METAL-HOSE-TO-GO[™]

Stainless Metal Hose Assemblies

In Stock for immediate delivery and use!



Hoses include pre-welded stainless threaded NPT (TOE) ends

Rough Bore (Unlined) Stainless Steel Hose					
Former Part Number	New Part Number	ID (in.)	OAL (ft.)*	Minimum Bend Radius (in.)	Weight (lbs./ea.)
S203X120STOE	HTS4200-300X10TOE	3	10	11.00	22
S204X120STOE	HTS4200-400X10TOE	4	10	14.50	28
S204X144STOE	HTS4200-400X12TOE	4	12	14.50	33
S204X228STOE	HTS4200-400X19TOE	4	19	14.50	52
S205X120STOE	HTS4200-500X10TOE	5	10	17.00	34
S205X228STOE	HTS4200-500X19TOE	5	19	17.00	61
S206X120STOE	HTS4200-600X10TOE	6	10	22.00	42

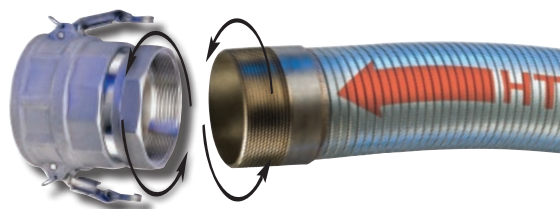


No welding required!

Smooth Bore (Lined) Stainless Steel Hose					
Former Part Number	New Part Number	ID (in.)	OAL (ft.)*	Minimum Bend Radius (in.)	Weight (lbs./ea.)
SS154X228STOE	HTSS5150-400X19TOE	4	19	15.00	67
SS184X120STOE	HTSS5180-400X10TOE	4	10	16.00	38
SS184X144STOE	HTSS5180-400X12TOE	4	12	16.00	45
SS184X180STOE	HTSS5180-400X15TOE	4	15	16.00	56
SS184X210STOE	HTSS5180-400X17.5TOE	4	17.5	16.00	65
SS184X228STOE	HTSS5180-400X19TOE	4	19	16.00	70
SS184X300STOE	HTSS5180-400X25TOE	4	25	16.00	92
SS185X180STOE	HTSS5180-500X15TOE	5	15	20.50	75
SS185X228STOE	HTSS5180-500X19TOE	5	19	20.50	93
SS186X120STOE	HTSS5180-600X10TOE	6	10	24.50	62
SS186X180STOE	HTSS5180-600X15TOE	6	15	24.50	90
SS186X228STOE	HTSS5180-600X19TOE	6	19	24.50	112
SS186X300STOE	HTSS5180-600X25TOE	6	25	24.50	146

* OAL (overall length) in "natural lie" state, actual length may vary slightly

1. Select your hose
2. Select your couplings
3. Thread together and done!



Please refer to the back page for the location of your nearest warehouse for availability of products/sizes shown.

BECAUSE WE CONTINUALLY EXAMINE WAYS TO IMPROVE OUR PRODUCTS, WE RESERVE THE RIGHT TO ALTER SPECIFICATIONS OR DISCONTINUE PRODUCTS WITHOUT PRIOR NOTICE.

Nominal Specifications

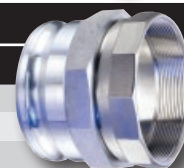
THREADED SWIVEL ALUMINUM FEMALE COUPLER WITH SS304 THREADED NPT INSERT

Part Number	Size (in.)	Weight Each (lbs.)	Standard Carton
KAS-C401	4	5.20	1
KAS-C501	5	6.53	1
KAS-C601	6	10.49	1



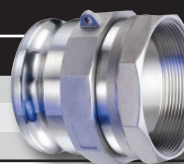
THREADED SWIVEL ALUMINUM MALE ADAPTOR WITH SS304 THREADED NPT INSERT

Part Number	Size (in.)	Weight Each (lbs.)	Standard Carton
KAS-E401	4	4.67	1
KAS-E501	5	5.42	1
KAS-E601	6	6.97	1



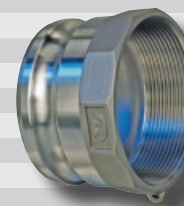
THREADED SWIVEL SS304 MALE ADAPTOR WITH SS304 THREADED NPT INSERT

Part Number	Size (in.)	Weight Each (lbs.)	Standard Carton
KSS-E401	4	6.12	1
KSS-E501	5	7.61	1
KSS-E601	6	11.07	1



THREADED PART 'A' QUICK-ACTING MALE ADAPTOR x FEMALE NPT (NON-SWIVEL)

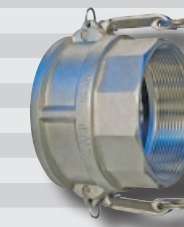
Part Number	Size (in.)	Weight Each (lbs.)	Standard Carton†
AL-A300	3	0.70	35
SS304-A300	3	2.16	8
SS-A300	3	2.16	8
AL-A400	4	1.58	20
SS304-A400	4	2.88	6
SS-A400	4	2.88	6
AL-A500	5	1.75	4
SS304-A500	5	4.30	4
SS-A500	5	4.30	4
AL-A600	6	2.95	15
SS304-A600	6	6.00	2
SS-A600	6	6.00	2



Note: Couplings can be purchased individually also.

THREADED PART 'D' QUICK-ACTING FEMALE COUPLER x FEMALE NPT (NON-SWIVEL)

Part Number	Size (in.)	Weight Each (lbs.)	Standard Carton†
AL-D300	3	1.80	20
SS304-D300	3	3.82	8
SS-D300	3	3.82	8
AL-D400	4	2.16	10
SS304-D400	4	5.14	6
SS-D400	4	5.14	6
AL-D500	5	3.42	4
SS304-D500	5	8.00	4
SS-D500	5	8.00	4
AL-D600	6	4.24	10
SS304-D600	6	10.06	2
SS-D600	6	10.06	2



Note: Couplings can be purchased individually also.

WHITE NEOPRENE (FDA) GASKETS FOR QUICK ACTING COUPLINGS

Part Number	Size (in.)	Weight Each (lbs.)	Standard Carton
WN300	3	0.042	10
WN400	4	0.066	10
WN500	5	0.094	10
WN600	6	0.116	10



Note: For standard part "A" and "D" Quick-Acting Couplings, please refer to our separate Kuriyama-Couplings™ full line catalog. Web: <http://www.kuriyama.com>

Please refer to the back page for the location of your nearest warehouse for availability of products/sizes shown.

BECAUSE WE CONTINUALLY EXAMINE WAYS TO IMPROVE OUR PRODUCTS, WE RESERVE THE RIGHT TO ALTER SPECIFICATIONS OR DISCONTINUE PRODUCTS WITHOUT PRIOR NOTICE.