

STYLE RTCHNL  
Round Top



STYLE THCHNL  
Tapered Hex  
Flat Top



STYLE HFTCHNL  
Hex Flat Top

## CHANNEL RUBBER STRIP

### SPECIFICATIONS:

Commercial grade black EPDM channel:

Hardness: 65 Duro hardness (Shore Durometer A)

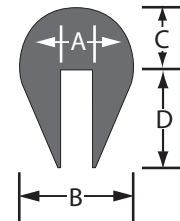
Tensile Strength: 1,650 PSI

Elongation: 310%

This channel rubber strip is ideal for use as a protective edge on shaker screens and a variety of other types of industrial equipment.

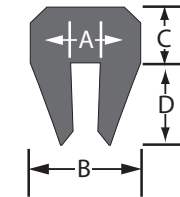
### Standard Round Top Channel

Part Number	Channel Size (in)	Temp. Range	Dimension (in)			
			A	B	C	D
RTCHNL-04x200	1/4	-40°F to +235°F	0.25	0.81	0.44	0.56
RTCHNL-06x200	3/8	-40°F to +235°F	0.38	1.00	0.50	0.50
RTCHNL-08x100	1/2	-40°F to +235°F	0.50	1.25	0.56	0.63
RTCHNL-12x100	3/4	-40°F to +235°F	0.75	1.20	0.63	1.40



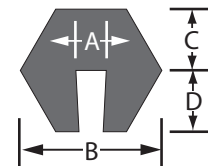
### Tapered Hex-Flat Top Channel

Part Number	Channel Size (in)	Temp. Range	Dimension (in)			
			A	B	C	D
THCHNL-04x200	1/4	-40°F to +235°F	0.25	0.65	0.38	0.63
THCHNL-06x200	3/8	-40°F to +235°F	0.38	0.85	0.50	0.63
THCHNL-08x100	1/2	-40°F to +235°F	0.50	1.20	0.50	0.69
THCHNL-12x100	3/4	-40°F to +235°F	0.75	1.45	0.50	0.75



### Hex-Flat Top Channel

Part Number	Channel Size (in)	Temp. Range	Dimension (in)			
			A	B	C	D
HFTCHNL-04x200	1/4	-40°F to +235°F	0.25	0.75	0.31	0.38
HFTCHNL-06x200	3/8	-40°F to +235°F	0.38	0.88	0.31	0.44
HFTCHNL-08x100	1/2	-40°F to +235°F	0.50	1.00	0.44	0.50
HFTCHNL-12x100	3/4	-40°F to +235°F	0.75	1.25	0.50	0.63



### ORDERING INFORMATION:

Part Number	Channel Size (in)	Roll Length Linear ft	Approx. lbs/Roll
RTCHNL-04x200	1/4	200	50
RTCHNL-06x200	3/8	200	70
RTCHNL-08x100	1/2	100	51
RTCHNL-12x100	3/4	100	70
THCHNL-04x200	1/4	200	44
THCHNL-06x200	3/8	200	64
THCHNL-08x100	1/2	100	48
THCHNL-12x100	3/4	100	62
HFTCHNL-04x200	1/4	200	34
HFTCHNL-06x200	3/8	200	42
HFTCHNL-08x100	1/2	100	44
HFTCHNL-12x100	3/4	100	40