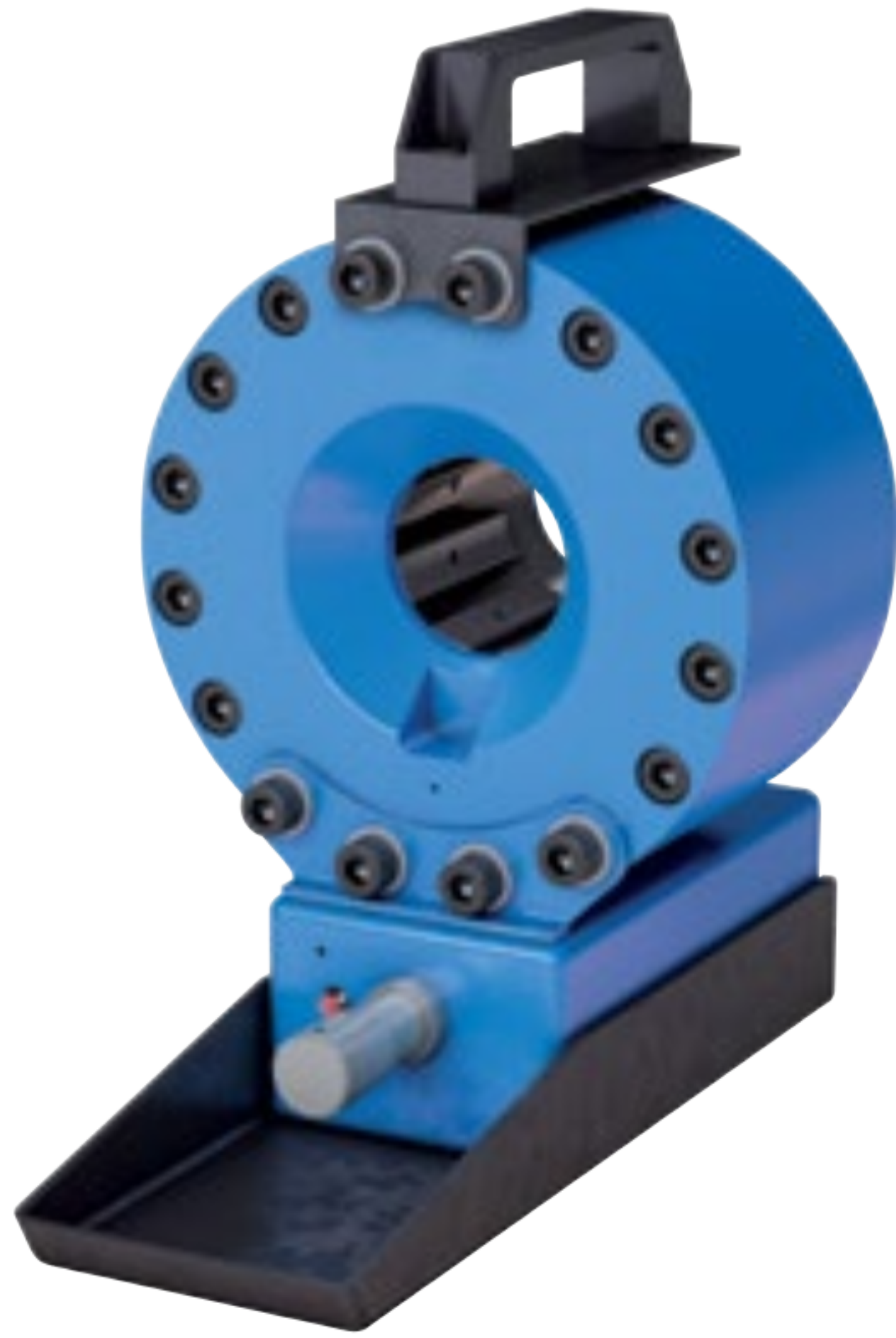


KC1-H47E Series



NEW



Case with eight dies (10, 12, 14, 16, 19, 22, 25 and 29 mm) available (sold separately)
PN# KC1-H47E-DIECASE

Hose Capacity (in)		Crimping Force (ton)
1 – 2 Wire	1	110
4 SP / 6 SP	NA	
90° Fittings	3/8	
Industrial	NA	

Opening Diameter	
Max. With Dies (mm / in)	49 / 1.93
By Die Size (mm / in)	Die Size + 20 / 0.79

Crimper Size	
L x W x H (in)	7.87 x 12.36 x 12.60
Weight (lbs)	52

Part Number	Pump Info
KC1-H47E	Hand, Air or Battery

DESCRIPTION

With its built-in carrying handle, and weighing a mere 52 lbs., this crimper was built for the road, perfect for on-site service in remote spots. It's powered by either a separate hand, pneumatic or battery powered pump (sold separately).

CONTROL MECHANISM



Dial micrometer, with electric limit switch indicating when the crimp diameter is reached.

INCLUDED ACCESSORIES



Die Change Tool
KCDCT-H39



Carry Handle

OPTIONAL ACCESSORIES



NEW

Battery Pump
KC1-H47E-BPP



Hand Pump
KC1-H47E-HP



Air Pump
KC1-H47E-PAP

Die Series	Die Range (mm)
H39	6 – 29

Die Number	Crimp Range (mm)	Closed Diameter (mm)	Length (mm)	Weight (lbs/ea)
KCDH39-6	6.0 - 8.0	6	55	4.0
KCDH39-8	8.0 - 10.0	8	55	4.0
KCDH39-10	10.0 - 12.0	10	55	4.0
KCDH39-12	12.0 - 14.0	12	55	4.0
KCDH39-14	14.0 - 16.0	14	55	4.0
KCDH39-16	16.0 - 19.0	16	55	4.0
KCDH39-19	19.0 - 22.0	19	55	4.0
KCDH39-22	22.0 - 25.0	22	55	4.0
KCDH39-25	25.0 - 29.0	25	65	4.0
KCDH39-29	29.0 - 34.0	29	65	4.0

See page 11 for hydraulic oil usage information

BATTERY PUMP INFO KC1-H47E-BPP

- One 14.4V battery (PN# BATT-H47E) included
- Charger included
- Compact and lightweight (only 18 lbs.)

NEW



(sold separately)



Support Frame
KC1-H47E-BASE



NEW

Case and Dies
KC1-H47E-DIECASE

Because we continually examine ways to improve our products, we reserve the right to alter specifications or discontinue products without prior notice.