

K-TOUGH[™] OIL

K9593 Series

High Pressure Oil Resistant Wire & Yarn Reinforced Suction & Discharge Hose

General Applications:

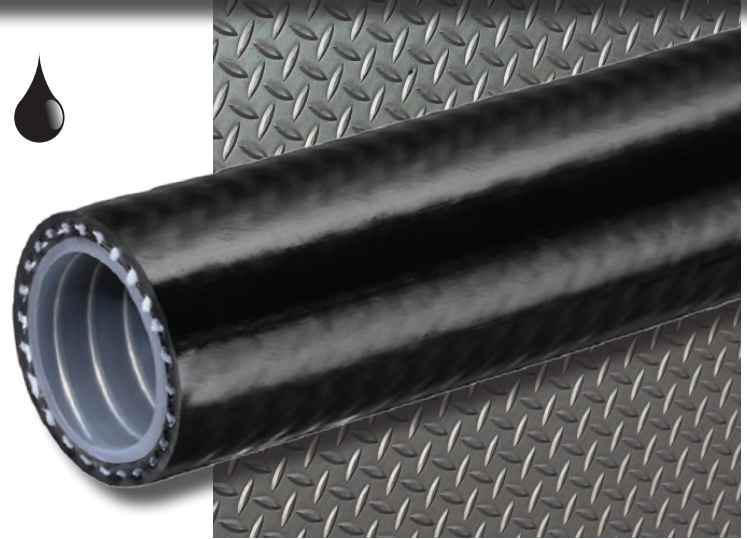
- Batch plants
- Constant flex applications
- Liquid chemical handling†
- Mining applications (MSHA)
- Oil field water hauling
- Suction & discharge of water and slurries
- Tank trucks
- Transfer of petroleum and other oil based products

Construction: Clear phthalate free PVC/polyurethane blended core, galvanized steel wire helix, high tensile strength yarn reinforcement and black phthalate free PVC/polyurethane blended cover.

Service Temperature Range: -5°F (-20°C) to 150°F (+65°C)*

Features and Advantages:

- **Food Grade Materials** – Hose complies with applicable FDA requirements.
- **Increased Pressure Rating** – New heavy duty construction resulting in a highly durable product, designed for both indoor and demanding outdoor applications.
- **Superior Flexibility** – More flexible than other similar hoses for ease-of-use.
- **High Cycle Strength** – Designed to resist damage from constant flex applications.
- **Abrasion Resistant Cover** – Resists wear from being dragged on rough surfaces.
- **Static Dissipative** – Steel wire helps prevent the build-up of static electricity for added safety (see below ††).
- **Oil Resistant** – Meets ARPM Class A (High oil resistance) rating.
- **MSHA Accepted** – Cover material accepted by MSHA as having met the requirements for acceptance of flame-resistant solid products taken into mines for hoses transferring air, oil, water or other fluids.



Nominal Specifications

Series	Size Code	Nominal ID		Nominal OD		Max. Working Pressure (psi) @ 70°F (20°C)	Vacuum Rating (in. Hg) @ 70°F (20°C)	Standard Length (ft.)	Approx. Weight Per Pkg. (lbs.)	Min. Bend Radius (in.) @ 70°F (20°C)
		(in)	(mm)	(in)	(mm)					
K9593	24	1.50	38.1	2.03	51.6	300	29.9	50/100	45/90	5.5
K9593	32	2.00	50.8	2.57	65.3	275	29.9	50/100	62/124	7.0
K9593	40	2.50	63.5	3.07	78.0	150	29.9	50/100	79/158	9.0
K9593	48	3.00	76.2	3.57	90.7	150	29.9	50/100	90/180	11.0

Note: Working Pressure decreases as temperature increases. Pressure ratings can only be obtained with proper coupling procedures. Use of compression fitting with Kuri Tec[®] reinforced hose is not recommended. Hose claims involving use of these fittings will be disallowed.

†† **Caution:** This product is designed to help dissipate static electricity when the metal wire is properly connected to ground through the fitting or other means.

† **Caution:** Consult Kuri Tec[®] PVC chemical resistance guide for suitability.

* Actual service temperature range is application dependent. Working pressure decreases as temperature increases.

Note: For details of the following compliances, refer to page 63 of the Kuri Tec catalog.

FDA⁽⁰³⁾, **MSHA**⁽⁰⁸⁾, **PHthalate FREE**⁽¹⁵⁾, **RoHS**⁽¹⁶⁾

Because we continually examine ways to improve our products, we reserve the right to alter specifications or discontinue products without prior notice.