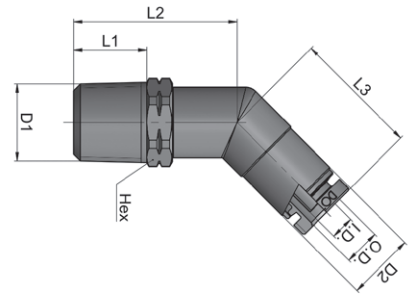


### Elbow Fittings



### Male Elbow 45° Swivel

DOT-BRME45S Series

#### Nominal Specifications

Part Number	Description	Tube OD (in)	Tube <sup>†</sup> ID (in)	D1 NPTF (in)	D2 (in)	L1 (in)	L2 (in)	L3 (in)	HEX (in)	Weight Each (lbs)	*Pieces Per Package
DOT-BRME45S-0402	MALE ELB 45 SWIVEL 1/4 TB X 1/8 NPTF	1/4	.165	1/8	.472	.335	0.906	0.886	1/2	0.059	25
DOT-BRME45S-0404	MALE ELB 45 SWIVEL 1/4 TB X 1/4 NPTF	1/4	.165	1/4	.472	.512	1.102	0.886	9/16	0.072	25
DOT-BRME45S-0604	MALE ELB 45 SWIVEL 3/8 TB X 1/4 NPTF	3/8	.244	1/4	.630	.512	1.142	1.024	11/16	0.116	25
DOT-BRME45S-0606	MALE ELB 45 SWIVEL 3/8 TB X 3/8 NPTF	3/8	.244	3/8	.630	.512	1.161	1.024	11/16	0.119	25
DOT-BRME45S-0608	MALE ELB 45 SWIVEL 3/8 TB X 1/2 NPTF	3/8	.244	1/2	.630	.669	1.378	1.024	7/8	0.159	25
DOT-BRME45S-0806	MALE ELB 45 SWIVEL 1/2 TB X 3/8 NPTF	1/2	.362	3/8	.787	.512	1.260	1.130	13/16	0.172	25
DOT-BRME45S-0808	MALE ELB 45 SWIVEL 1/2 TB X 1/2 NPTF	1/2	.362	1/2	.787	.669	1.437	1.130	7/8	0.200	25

† Note: The "Tube ID (in)" column heading refers to "Tube Support ID (in)"

\*Only sold in package quantities

Because we continually examine ways to improve our products, we reserve the right to alter specifications or discontinue products without prior notice.