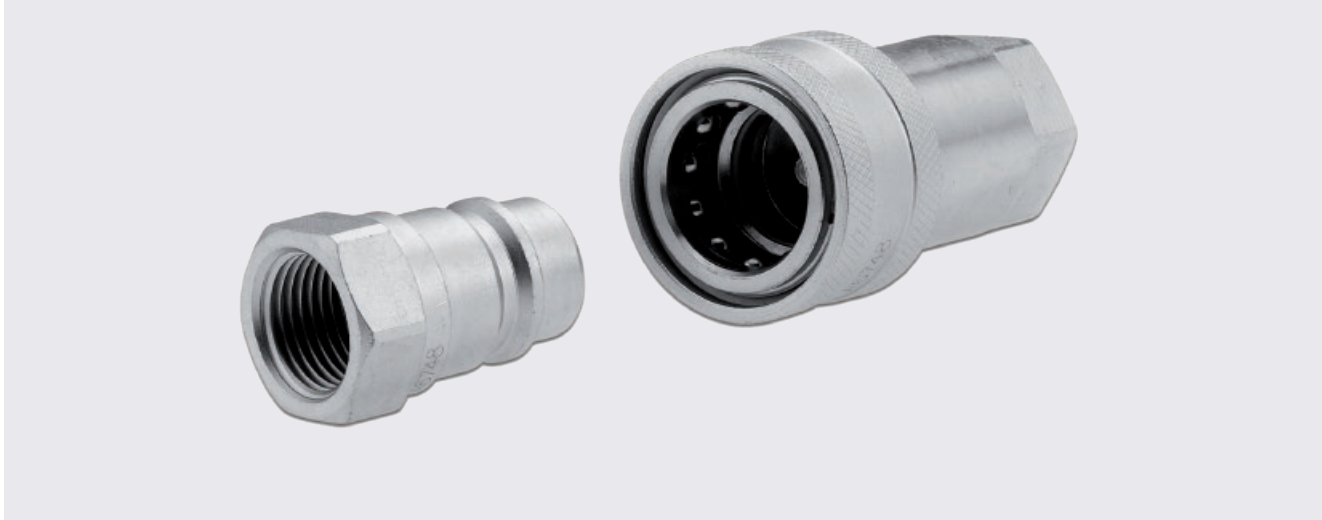


## QA-ISO-A

POPPET STANDARD ISO 7241 A



DN 6 to 51  
1/4" to 2"



to max WP 350 bar  
5075 PSI

- Quick and simple coupling and uncoupling
- Cost effective
- Also available in stainless steel

**General features:** ARGUS ISO 7241-1 series “A” quick release couplings are used for quick coupling and uncoupling of hydraulic lines. During the coupling action in zero or low-pressure ranges, valves that release or block the flow are automatically activated. The QA-ISO-A quick release coupling, formed by the coupling plug and the coupling socket, is connected by pushing on a sleeve. This guarantees a flush connection between the two coupling halves.

**Materials:** galvanized steel with hardened parts subject to wear - NBR O-rings (other materials optional) - Thermoplastic dust cap and dust plug. Cr-III zinc plating through additional passivation for improved surface protection (TOP COAT for metric version).

**Application:** suitable for liquid lines with mineral oil-based hydraulic fluids to DIN 51524 T1+T2.

**Norm:**  
ISO 7241 A

**Temperature range:**  
-4°F (-20°C) to +212°F (+100°C)  
Temp. range for metric version -22°F (-30°C) to 257°F (+125°C)

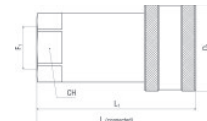
**Note:** rated flow / pressure drop compliant with ISO 7241-1 standard.

Specific instructions for installation, use and maintenance are separately provided.

Because we continually examine ways to improve our products, we reserve the right to alter specifications or discontinue products without prior notice.

## STANDARD ISO 7241 A - POPPET QA-ISO-A

Female coupling - Female thread

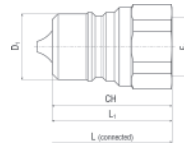


Item Code	⊗			Working Pressure psi	Burst Pressure psi	Thread 1	F1	D1	CH	L1	L
	Dash	mm	in					mm	mm	mm	mm
QAF-0404-FNPR	04	6.0	1/4	5075	20300	NPTF	1/4-18	26.0	19.0	50.0	74.20
QAF-0606-FNPR	06	10.0	3/8	4568	18270	NPTF	3/8-18	31.5	22.0	57.1	78.50
QAF-0808-FNPR	08	13.0	1/2	3915	15660	NPTF	1/2-14	38.5	27.0	66.0	88.20
QAF-1212-FNPR	12	19.0	3/4	3625	14500	NPTF	3/4-14	48.0	34.0	82.5	110.40
QAF-1616-FNPR	16	25.0	1	2900	11600	NPTF	1-11 1/2	56.0	41.0	100.0	132.90
QAF-2424-FNPR	24	38.0	1 1/2	2320	9280	NPTF	1 1/2-11 1/2	84.5	60.0	133.0	167.00
QAF-3232-FNPR	32	51.0	2	1450	5800	NPTF	2-11 1/2	99.0	75.0	165.0	210.00

Other threads available. Please consult factory.

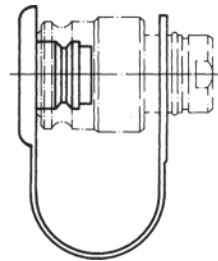
## STANDARD ISO 7241 A - POPPET QA-ISO-A

Male coupling - Female thread



Item Code	⊗			Working Pressure psi	Burst Pressure psi	Thread 1	F1	D1	CH	L1	L
	Dash	mm	in					mm	mm	mm	mm
QAM-0404-FNPR	04	6.0	1/4	5075	20300	NPTF	1/4-18	11.8	19.0	38.5	74.20
QAM-0606-FNPR	06	10.0	3/8	4568	18270	NPTF	3/8-18	17.3	22.0	39.0	78.50
QAM-0808-FNPR	08	13.0	1/2	3915	15660	NPTF	1/2-14	20.5	27.0	44.0	88.20
QAM-1212-FNPR	12	19.0	3/4	3625	14500	NPTF	3/4-14	29.0	34.0	55.0	110.40
QAM-1616-FNPR	16	25.0	1	2900	11600	NPTF	1-11 1/2	34.3	41.0	66.0	132.90
QAM-2424-FNPR	24	38.0	1 1/2	2320	9280	NPTF	1 1/2-11 1/2	55.0	60.0	83.5	167.00
QAM-3232-FNPR	32	51.0	2	1450	5800	NPTF	2-11 1/2	65.0	75.0	105.0	210.00

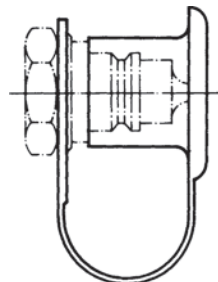
Other threads available. Please consult factory.



## STANDARD ISO 7241 A - POPPET QA-ISO-A

Dust plug for female coupling

Item Code	Color	Material	⊗		
			Dash	mm	inch
QAP-04	RED	PE	04	6.0	1/4
QAP-06	RED	PE	06	10.0	3/8
QAP-08	RED	PE	08	13.0	1/2
QAP-12	RED	PE	12	19.0	3/4
QAP-16	RED	PE	16	25.0	1



## STANDARD ISO 7241 A - POPPET QA-ISO-A

Dust cap for male coupling

Item Code	Colour	Material	⊗		
			Dash	mm	inch
QAC-04	RED	PE	04	6.0	1/4
QAC-06	RED	PE	06	10.0	3/8
QAC-08	RED	PE	08	13.0	1/2
QAC-12	RED	PE	12	19.0	3/4
QAC-16	RED	PE	16	25.0	1

Because we continually examine ways to improve our products, we reserve the right to alter specifications or discontinue products without prior notice.