

05/03/2007

INSTRUCTIONS FOR GROUNDING ALFAGOMMA RUBBER HOSE WITH ELECTROSTATIC WIRES

Step 1 - LOCALIZATION OF THE ELECTROSTATIC WIRES ON THE ENDS

OUTER WIRE

INNER WIRE



ALFAGOMMA INDUSTRIAL S.p.A.

Cap. Soc. € 1.872.000,00 I.V. – REA Teramo N° 92225 – C. F. e P.IVA N° IT 00730430675

Registered Office, Administration and Plant/Sede legale, Amministrativa e Stabilimento: Nucleo Industriale – 64020 S. Atto (TE) ITALY – TEL. +39 0861.44.21 – FAX +39 0861.58.85.70

Sales/Commerciale: Via Torri Bianche, 1 – 20059 Vimercate (MI) ITALY - TEL. +39 039.60.16.1 – FAX +39 039.62.87.279

www.alfagomma.com e-mail: info@alfagomma.it

Step 2 – INNER WIRE DISCOVERING

2 A– Identify inner wire direction:

Peel the tube in the area near the inner wire, in order to discover 4-5 mm of wire, or anyway for the length sufficient to identify the wire direction

This operation should be made with a sharp cutter;

Care should be used for avoid the wire cutting:

Mark with a pen the wire direction



ALFAGOMMA INDUSTRIAL S.p.A.

Cap. Soc. € 1.872.000,00 I.V. – REA Teramo N° 92225 – C. F. e P.IVA N° IT 00730430675

Registered Office, Administration and Plant/Sede legale, Amministrativa e Stabilimento: Nucleo Industriale – 64020 S. Atto (TE) ITALY – TEL. +39 0861.44.21 – FAX +39 0861.58.85.70

Sales/Commerciale: Via Torri Bianche, 1 – 20059 Vimercate (MI) ITALY - TEL. +39 039.60.16.1 – FAX +39 039.62.87.279

www.alfagomma.com e-mail: info@alfagomma.it

2 A



ALFAGOMMA INDUSTRIAL S.p.A.

Cap. Soc. € 1.872.000,00 I.V. – REA Teramo N° 92225 – C. F. e P.IVA N° IT 00730430675

Registered Office, Administration and Plant/Sede legale, Amministrativa e Stabilimento: Nucleo Industriale – 64020 S. Atto (TE) ITALY – TEL. +39 0861.44.21 – FAX +39 0861.58.85.70

Sales/Commerciale: Via Torri Bianche, 1 – 20059 Vimercate (MI) ITALY - TEL. +39 039.60.16.1 – FAX +39 039.62.87.279

www.alfagomma.com e-mail: info@alfagomma.it

2 B – Pull a tube strip 15 Mm Wide X 50 Mm Length

- By using a sharp cutter make two cuts which should be parallel to the wire direction , each one at a 7-8 mm distance from the wire; the cut depth should be greater than the tube thickness.

- By using a clamp and a cutter pull the strip of tube enclosed in this area.

Since the tube has a high resistance to be pulled-off , a cutter is needed to make transversal cuts for favouriting the strip pulling.

Care should be taken to avoid the wire cutting.



2B



ALFAGOMMA INDUSTRIAL S.p.A.

Cap. Soc. € 1.872.000,00 I.V. – REA Teramo N° 92225 – C. F. e P.IVA N° IT 00730430675

Registered Office, Administration and Plant/Sede legale, Amministrativa e Stabilimento: Nucleo Industriale – 64020 S. Atto (TE) ITALY – TEL. +39 0861.44.21 – FAX +39 0861.58.85.70

Sales/Commerciale: Via Torri Bianche, 1 – 20059 Vimercate (MI) ITALY - TEL. +39 039.60.16.1 – FAX +39 039.62.87.279

www.alfagomma.com e-mail: info@alfagomma.it

2 C Free the inner wire direction

- Let the electrostatic wire free from the textile yarn and /or rubber particles which tie it to the body ; then and bent the electrostatic wire on the inside



Step 3 – OUTER WIRE DISCOVERING

3 A – Identify the outer wire direction

Peel the outer cover in the area of the outer wire until the wire direction is identified, This operation should be taken with a sharp cutter; care should be taken for avoid the wire cutting. Mark the wire direction with a pen – as done for the tube.



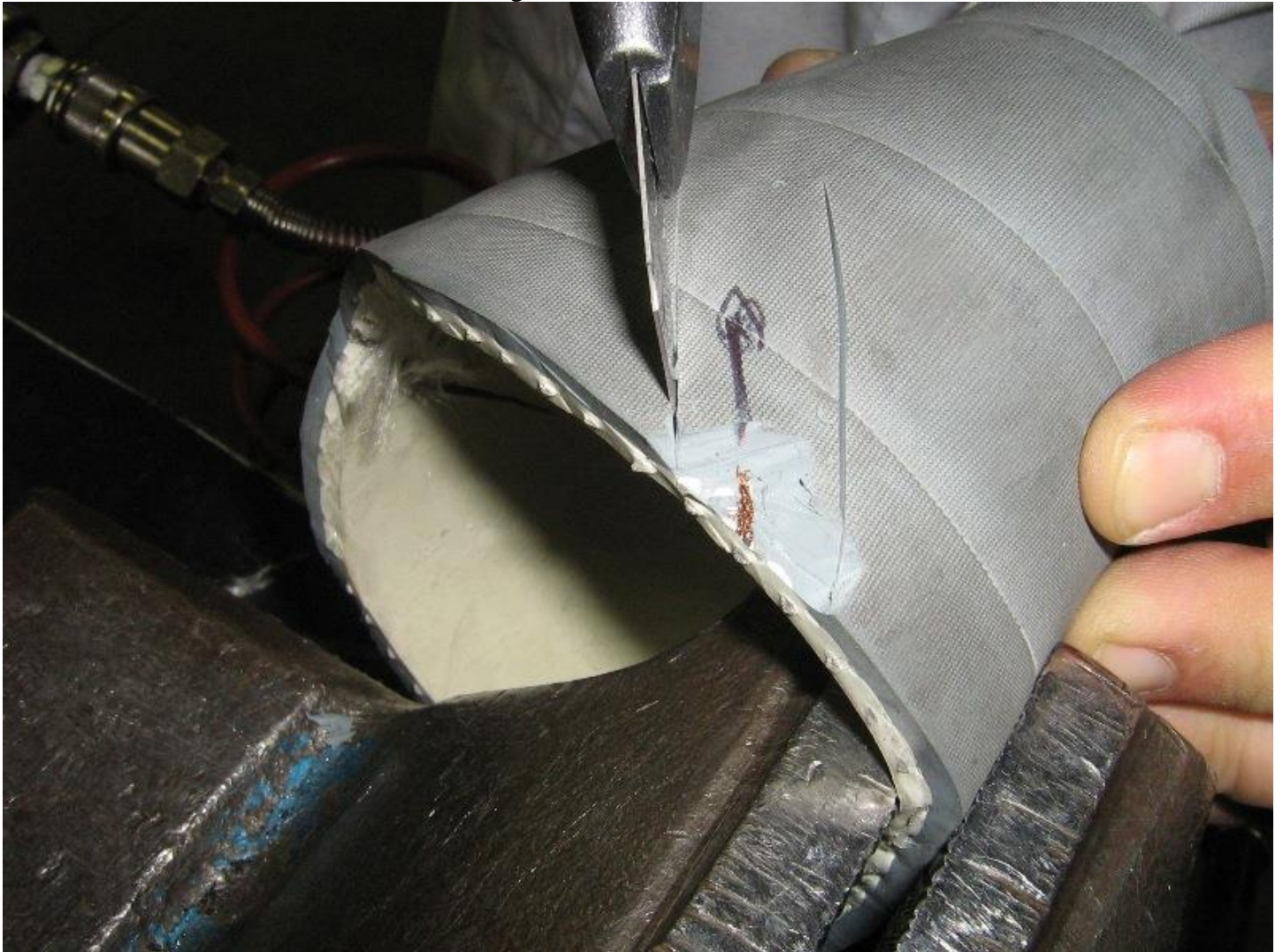
3 B Pull a cover strip 15 MM WIDE X 40 MM LENGTH

- By using a cutter make two cuts which should be parallel to the wire direction , each one at a 7-8 mm distance from the wire; the cut depth should be greater than the cover thickness.

- By using a clamp and a cutter pull the strip of tube enclosed in this area.

Since the cover has a high resistance to be pulled-off , a cutter is needed to make transversal cuts for favouriting the strip pulling.

Care should be taken to avoid the wire cutting.



ALFAGOMMA INDUSTRIAL S.p.A.

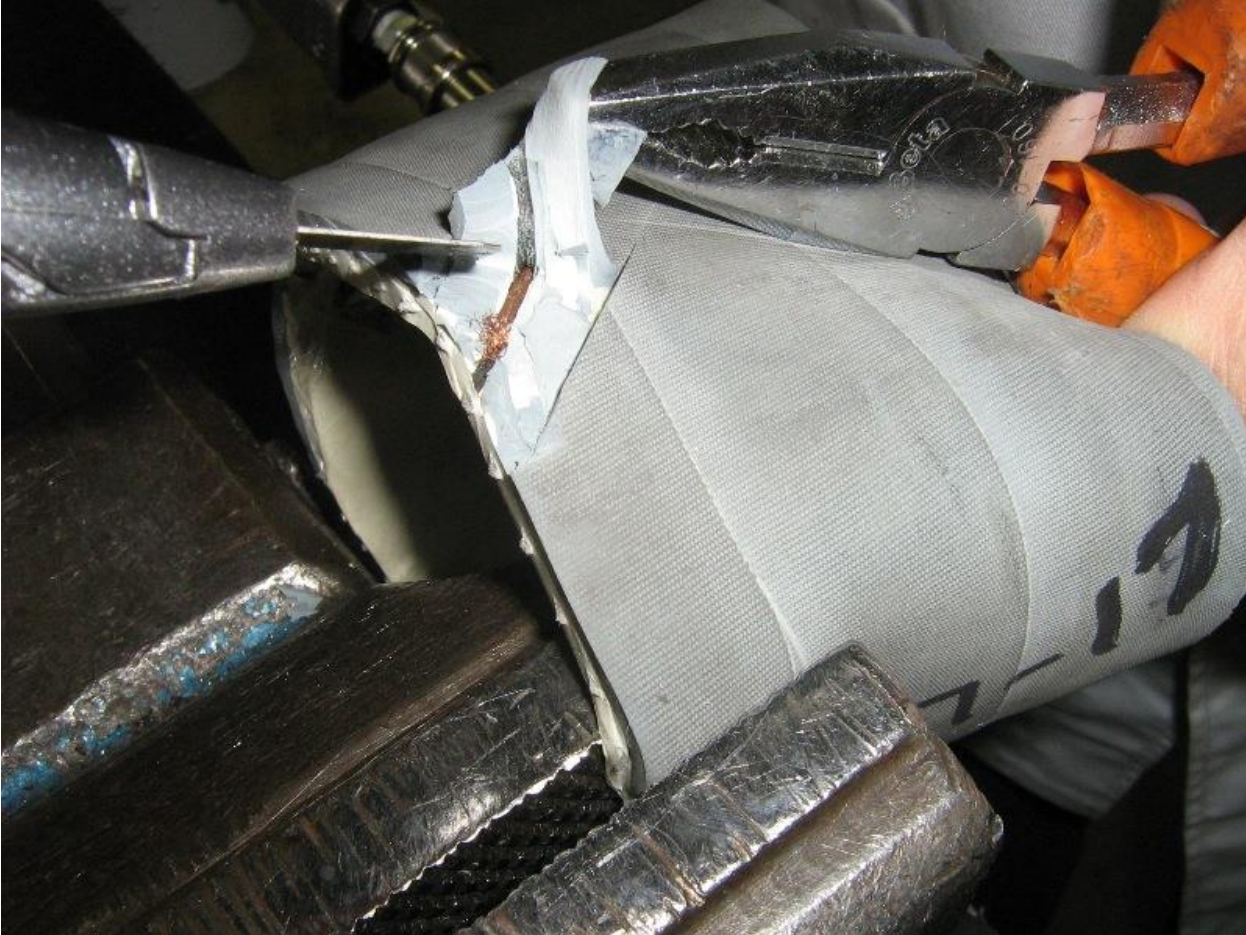
Cap. Soc. € 1.872.000,00 I.V. – REA Teramo N° 92225 – C. F. e P.IVA N° IT 00730430675

Registered Office, Administration and Plant/Sede legale, Amministrativa e Stabilimento: Nucleo Industriale – 64020 S. Atto (TE) ITALY – TEL. +39 0861.44.21 – FAX +39 0861.58.85.70

Sales/Commerciale: Via Torri Bianche, 1 – 20059 Vimercate (MI) ITALY - TEL. +39 039.60.16.1 – FAX +39 039.62.87.279

www.alfagomma.com e-mail: info@alfagomma.it

3B



ALFAGOMMA INDUSTRIAL S.p.A.

Cap. Soc. € 1.872.000,00 I.V. – REA Teramo N° 92225 – C. F. e P.IVA N° IT 00730430675

Registered Office, Administration and Plant/Sede legale, Amministrativa e Stabilimento: Nucleo Industriale – 64020 S. Atto (TE) ITALY – TEL. +39 0861.44.21 – FAX +39 0861.58.85.70

Sales/Commerciale: Via Torri Bianche, 1 – 20059 Vimercate (MI) ITALY - TEL. +39 039.60.16.1 – FAX +39 039.62.87.279

www.alfagomma.com e-mail: info@alfagomma.it

3 C Free the outer wire direction

- Let the electrostatic wire free from the textile yarn and /or rubber particles which tie it to the body



ALFAGOMMA INDUSTRIAL S.p.A.

Cap. Soc. € 1.872.000,00 I.V. – REA Teramo N° 92225 – C. F. e P.IVA N° IT 00730430675

Registered Office, Administration and Plant/Sede legale, Amministrativa e Stabilimento: Nucleo Industriale – 64020 S. Atto (TE) ITALY – TEL. +39 0861.44.21 – FAX +39 0861.58.85.70

Sales/Commerciale: Via Torri Bianche, 1 – 20059 Vimercate (MI) ITALY - TEL. +39 039.60.16.1 – FAX +39 039.62.87.279

www.alfagomma.com e-mail: info@alfagomma.it

4 – Turning the outer cover to the hose inside.

Make a longitudinal cut, close to the outer wire, for the whole tube wall;

Turn the outer wire on the tube inside by passing through the longitudinal cut.



ALFAGOMMA INDUSTRIAL S.p.A.

Cap. Soc. € 1.872.000,00 I.V. – REA Teramo N° 92225 – C. F. e P.IVA N° IT 00730430675

Registered Office, Administration and Plant/Sede legale, Amministrativa e Stabilimento: Nucleo Industriale – 64020 S. Atto (TE) ITALY – TEL. +39 0861.44.21 – FAX +39 0861.58.85.70

Sales/Commerciale: Via Torri Bianche, 1 – 20059 Vimercate (MI) ITALY - TEL. +39 039.60.16.1 – FAX +39 039.62.87.279

www.alfagomma.com e-mail: info@alfagomma.it



Step 5 : Connect the insert

In order to assure a good electric contact it is recommended a longitudinal placement of the wires,; in this way part of the wires can be in contact with the protruding area of the insert (teeth) .

Quinto Piccioni