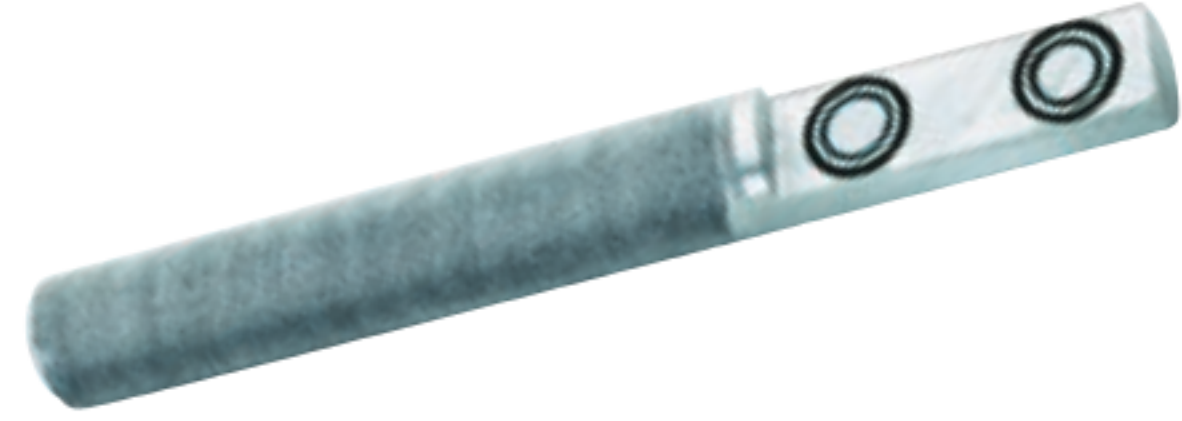
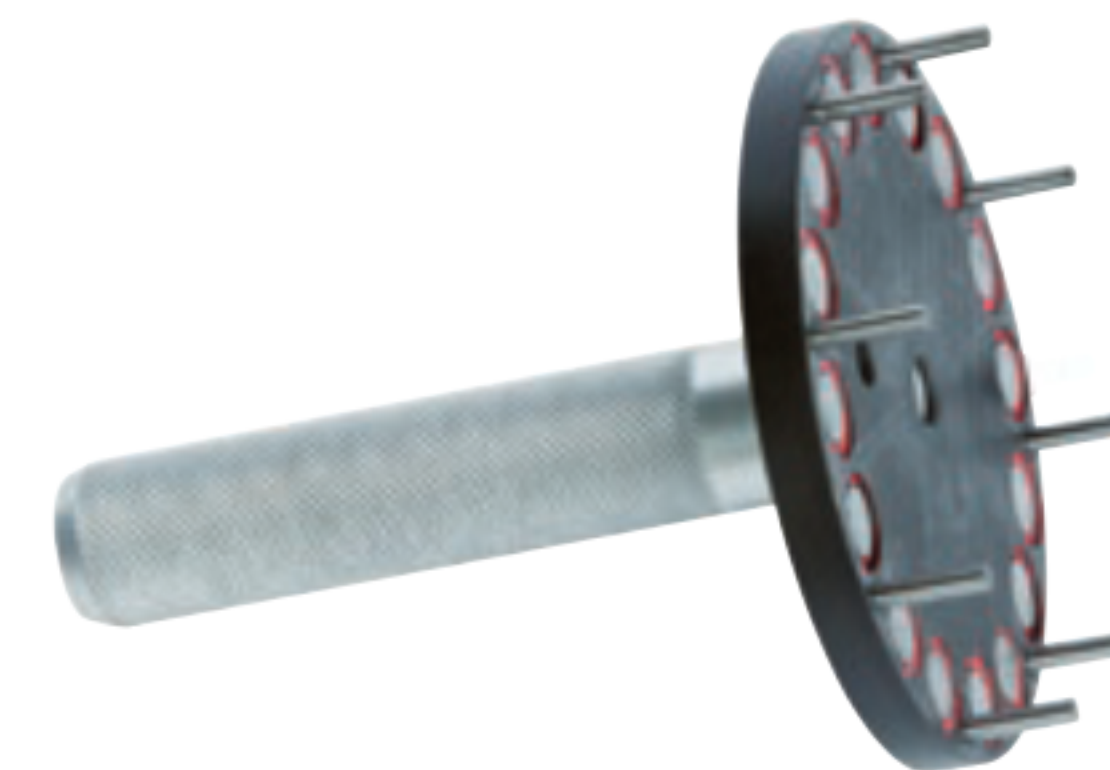


Quick Change Tools (QCT)



Die Change Tool

Part Number	Works with Crimpers
KCDCT-H39	KC1-H47E, KC1-H47PM & KC1-H47PI



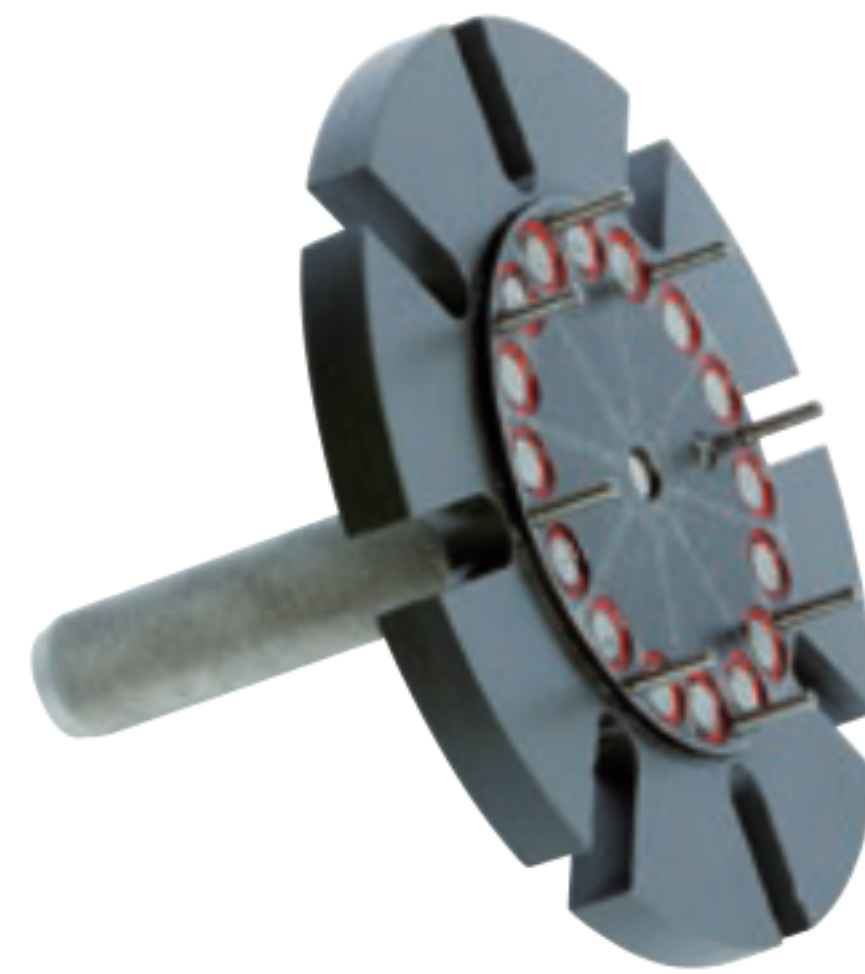
Quick Change Tool

Part Number	Works with Crimpers
KCQCT-H69	KC1-H83, KC3-H88 & KC4-V59
KCQCT-H119	KC1-H130, KC3-H130, KC1-H135, KC3-H135, KC3-H170, KC3-H144, KC4-V150, KC4-V159, KC4-V160, KC4-V250, KC4-V300 & KC4-V450



Patented Quick Change Tool

Part Number	Works with Crimpers
KCPQCT-H69	KC1-H83 & KC3-H88



Patented Quick Change Tool

Part Number	Works with Crimpers
KCPQCT-H130	KC1-H130, KC3-H130
KCPQCT-H135	KC1-H135, KC3-H135 & KC3-H144
KCPQCT-H170	KC3-H170



Patented Quick Change Tool

Part Number	Works with Crimpers
KCPQCT-V59	KC4-V59
KCPQCT-V159	KC4-V150, KC4-V159
KCPQCT-V160	KC4-V160
KCPQCT-V250	KC4-V250

Foot Pedals



Electric Foot Pedal

Part Number	Works with Crimpers
PEDAL-KC1	All KC1 Series models*

*Standard Volume Crimpers only



Electric Foot Pedal

Part Number	Works with Crimpers
PEDAL-ES	All KC3 & KC4 Series models

Because we continually examine ways to improve our products, we reserve the right to alter specifications or discontinue products without prior notice.