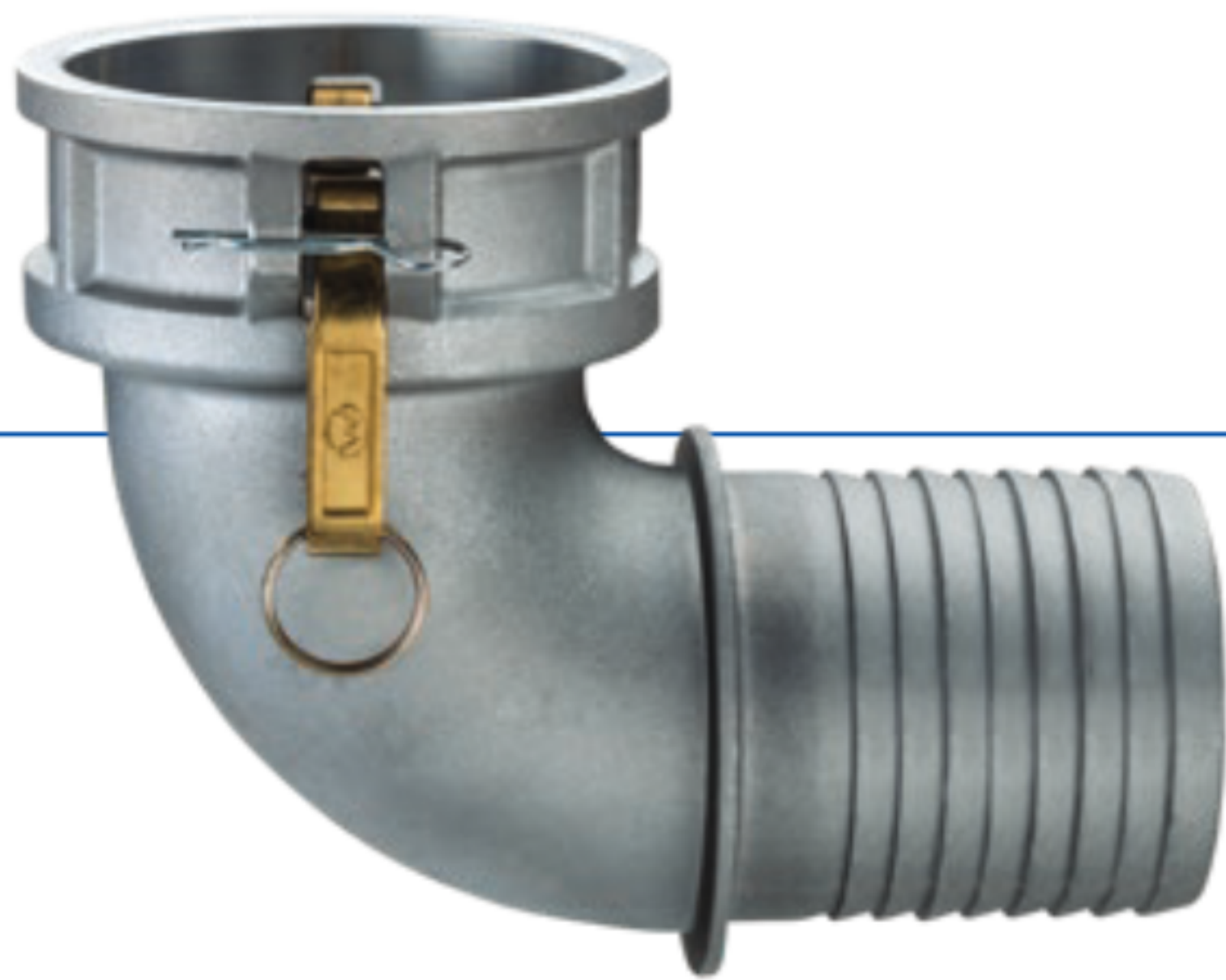


DC90-AL Series (Aluminum Part C x Hose Shank 90° Elbow) Female Coupler X Hose Shank



VIEW ONLINE



SCAN FOR INFO
or visit
KOA.link/DC90-AL

GENERAL APPLICATIONS

Kuriyama Camlock Couplings are intended for use in many industrial applications. To learn more, please refer to pages 296-297 in this catalog.

FEATURES AND ADVANTAGES

- High quality design made to withstand rigorous applications found in industrial markets.
- Aluminum alloy specially designed for high tensile strength and impact resistance.
- Supplied with forged brass handles which results in less wear on connecting parts.

MATERIAL SPECIFICATIONS

- ASTM aluminum alloy.
- Complies with Mil-Spec A-A-59326 for interchangeability.
- Forged brass handles.
- Zinc-plated carbon steel handle pins, pull rings and safety clips.
- Buna-N gasket included.

Part Number	Size (in)	PSI Rating at 70°F	ASTM Specification	Weight Each (lbs)	Standard Carton
DC90-A150	1 1/2	250	B85 Grade 383	1.08	24
DC90-A200	2	250	B85 Grade 383	1.48	24
DC90-A300	3	150	B85 Grade 383	2.50	10
DC90-A400	4	150	B85 Grade 383	4.80	5
DC90-A600	6	75	B85 Grade 383	14.50	2

Because we continually examine ways to improve our products, we reserve the right to alter specifications or discontinue products without prior notice.