

The Conqueror™ Concrete Hose System includes a complete line of hose, fittings and clamps; all designed to work together seamlessly to ensure complete product compatibility and safety.

The line features our popular T740AA Series Steel Reinforced Concrete Hose, popular in boom concrete pump applications such as bridges, dams, commercial buildings and other projects where a larger hose is preferred in order to pump at higher volumes. In addition, the new, T74SAA Series Textile Fabric Reinforced Concrete Hose, provides a lighter weight option for use on trailer mounted line pumps; popular in smaller, residential applications, where a lighter weight hose is preferred in order to be carried by hand over longer distances.

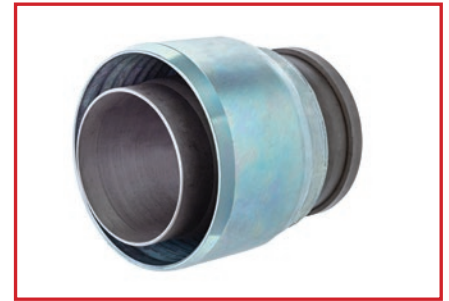
Both hoses have abrasion resistant natural rubber (NR) tubes to handle the abrasive sand and gravel contained in cement mixtures. As a result, the T74SAA can also be successfully used in boom concrete pump applications where a lighter weight hose is preferred.



T740AA
Wire Reinforced Concrete Hose



T74SAA
Textile Reinforced Concrete Hose

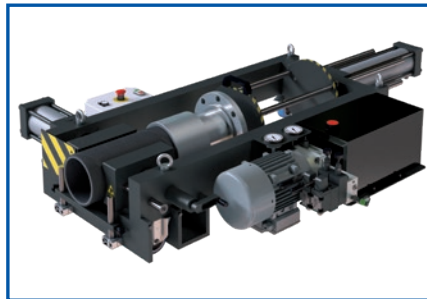


CHC-CA
Concrete Hose Coupling

The line also includes a complete assembly system, brought to you by our line of KuriCrimp™ Crimpers and Hose Processing Equipment. The heavy duty nature of concrete hose provides additional challenges in the hose assembly process. In particular, concrete hose provides additional challenges with fitting insertion due to the interference fit between the hose and fitting shank. The KuriCrimp system includes our KPUSH22-CON 22,000 lb. Heavy Duty Hose Pusher, custom modified with fitting insertion mandrels and hose clamp attachments, specifically designed for Conqueror Concrete Hose and Couplings.



KCS-TF5-230/3
Hose Cutter



KPUSH22-CON
Hose Pusher



KC4-V160-230/3
High Volume Crimper

Because we continually examine ways to improve our products, we reserve the right to alter specifications or discontinue products without prior notice.